

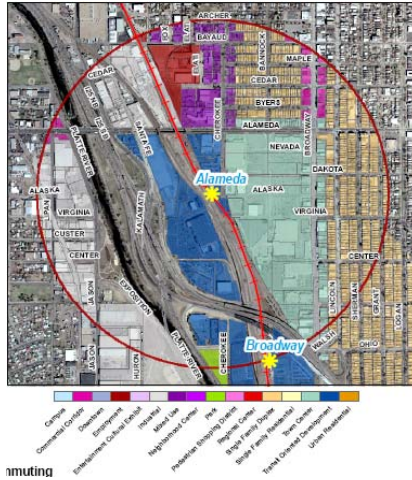
Thinking TOD in 360°

Persuading planners to think creatively about the biggest obstacles to TOD access.

Objectives & Vision

- Help to break down the psychological “road-blocks” to transit oriented development around difficult barriers.
- Show that 360° planning processes can take place with creative forethought to including barriers in vision
- Add inclusiveness to a planning project for all directions from and to the central space

Alameda Station Project



- East side planning mostly complete
- West side far more complicated and involves more effort to incorporate TOD concepts
- One east-west access point to western neighborhoods

Alameda Crossing

- Intimidating to all traffic, whether it be automobile, bike, or pedestrian.
- Not wide enough for two way pedestrian or bike travel.
- Minimal safety features (guardrails, signal crossings)
- Very few attractive concepts to make east west travel a comfortable venture.



Project Area



Map View of Area



Map Section of West Alameda Station Project



Tactics and Deliverables

- Make the voice of the neighborhoods at all points around the project known.
- Attend every public planning meeting or event.
- Work with the neighborhood association to bring the ideas generated at the event back to the local arena, engage the neighborhood association in the planning.

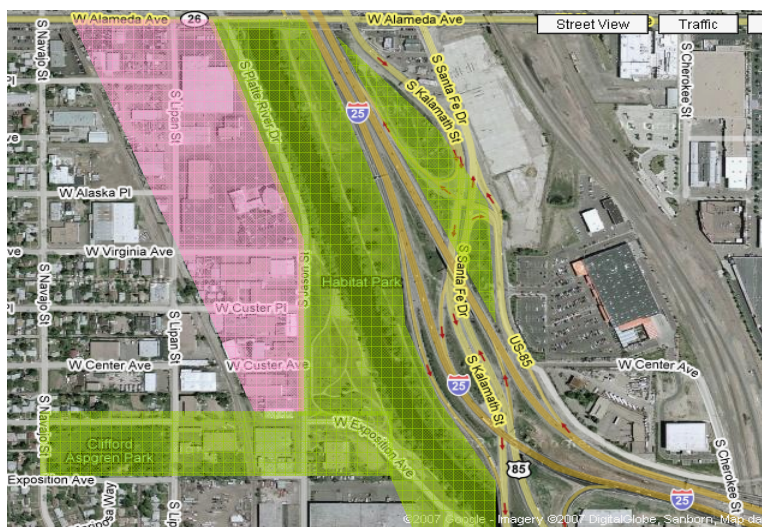
Tactics and Deliverables

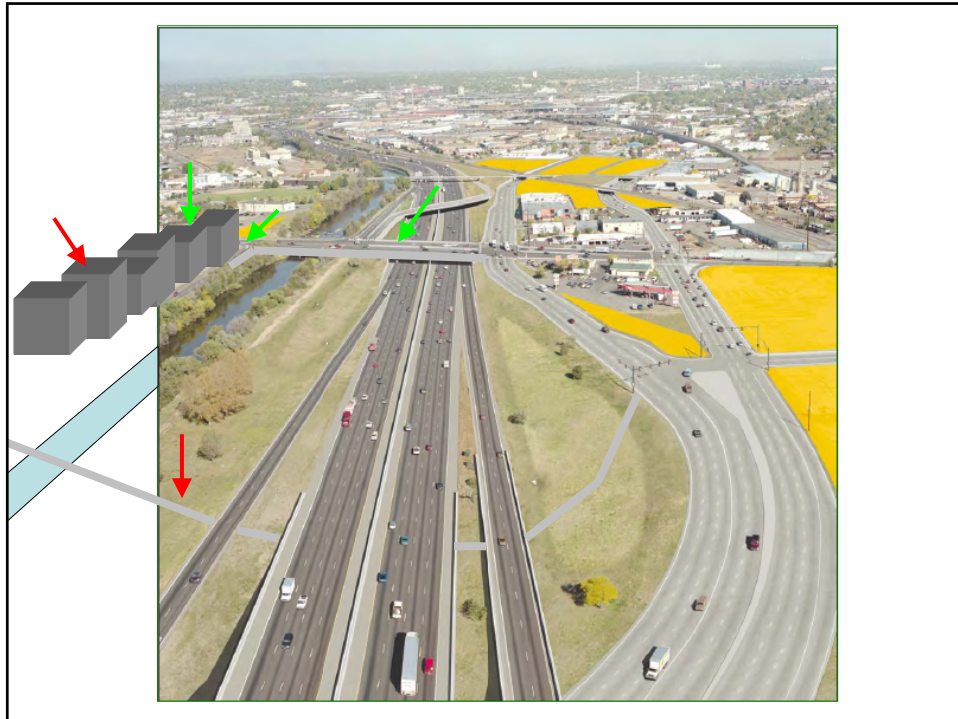
- Broaden the public knowledge about the project and the planning process, especially in the affected neighborhoods (Neighborhood association newsletter)
- Place informational posters in public places to engage interest in the project.
- Leave an e-mail address and request opinions from the neighborhood.

Tactics and Deliverables

- Engage public planners directly and meet with them to encourage them to think past the barriers in their project. Present ideas to Blueprint Denver.
- Contact influential business leaders and interested parties to engage them in creative ideas that will spur developmental interest in the project.
- Offer creative alternatives that benefit all involved and encourage participation.

Ideas for land use





Timeline

- Affected by factors such as development to east, valley highway project, and possible future development at Jason and Alameda
 - Presentation to civic planners (current as of 11/6/07)
 - Presentation of update to neighborhood and neighborhood board (November & early 2008)
 - Suggestions to Blueprint Denver and development groups (through 2008)

Completion?

- Access options to TOD have increased for those wishing to cross the South Platte and Valley Highway to reach either side of the Alameda station area in the western region.
- Development has begun to reconnect the divide separating the sides of the Alameda Station area.

Zoomed

