



Citizen's Academy

Session One

Reshaping Metro Denver

August 8, 2007



Denver

- Demonstration Line in '94
- Expanded in 2000 & 2002
- T-REX opened in November 2006
- FasTracks in about 9 years

FasTracks

- 119 miles of new light rail and commuter rail 18 miles of bus rapid transit service
- 21,000 new parking spaces at rail and bus stations
- Expanded bus service in all areas
- FasTracks completed in 2016



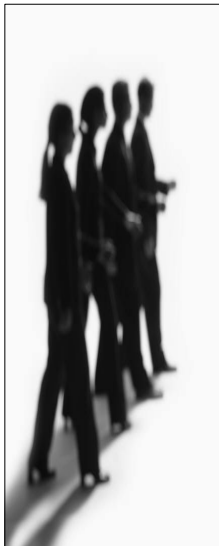
FasTracks Political Success Due to:

- Lessons Learned from Guide the Ride
- Strong Plan
- Consensus/Coalition Building
- Strong Elected Officials Support
- Strong Business Support
- Proven Local Success of Light Rail
- Pre-campaign Planning
- Well-executed Political Campaign, FasTracks YES!



Visionary Plan

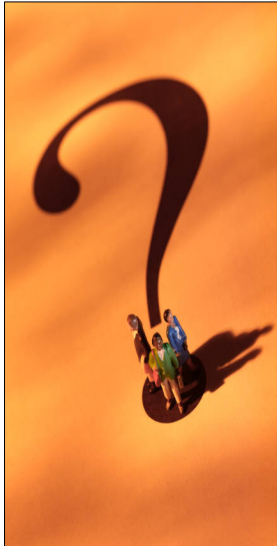
- Regional Transportation District (RTD): FasTracks
- Extensive Discussion with Communities
- Address Local Communities' Concerns



Consensus/ Coalition Building

Transit Alliance, established early 1998:

- Coalition of 40 plus entities
- Purpose: support expansion of rail and bus transit as part of a balanced, multi-modal transportation network
- Educate and galvanize community support for transit (newsletters, forums, elected official handbook)
- All groups at the table (emails, quarterly meetings)
- Not transit vs. roads



BUT...
There's
Something
Missing?



Metro Denver's New P.O.P. Culture



Creating & Sustaining People-Oriented Places

A Transit Alliance Best Practices Study



The Client:

**A slow, linear, horizontal,
max 3mph walking creature**



3 MPH Architecture

- small spaces
- small signals
- details
- people
- close ups + distant views



45 MPH Architecture

- large spaces
- huge signals
- no details
- no people

FasTracks

- Adding almost 60 stations
- In just a little over 9 years we will have 90 transit stations
- NO ONE else is doing this
- All Eyes are on the Denver Region



Exhibit 1-3: Summary of Completed and Under Construction Projects by Corridor

Data	Central/CPV	Gold	I-225	North Metro	Southeast	Southwest	US36	West	Grand Total
Residential Units	5,490	410	550	276	3,704	481	914	0	11,825
Hotel Rms	2,214	0	0	0	0	0	0	0	2,214
Retail SF	624,200	265,924	16,000	57,000	459,450	657,804	2,120,400	415,000	4,615,778
Office SF	2,287,600	19,372	0	0	294,000	60,000	159,000	0	2,819,972
Institution SF	2,449,000	0	3,240,000	0	0	0	0	0	5,689,000

Exhibit 1-4: Summary of Proposed Projects by Corridor

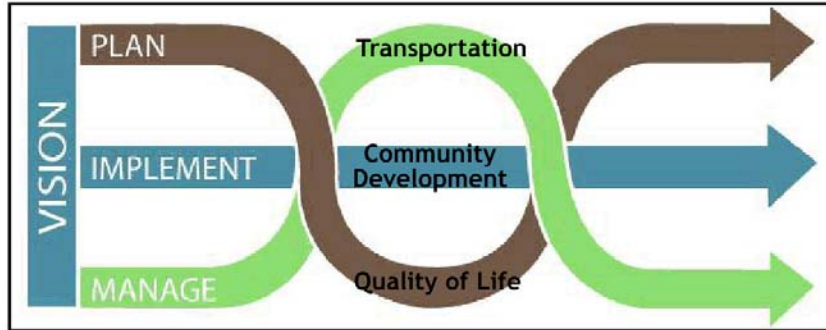
Data	Central/CPV	East	Gold	I-225	North Metro	Southeast	Southwest	US36	West	Grand Total
Residential Units	5,171	24	625	1,273	753	4,372	939	1,173	10	14,340
Hotel Rms	1,052	505	0	260	0	600	300	160	0	2,877
Retail SF	1,142,100	0	0	435,000	0	441,400	1,100,000	164,270	16,000	3,298,770
Office SF	1,877,500	0	0	235,000	0	863,000	0	150,000	0	3,125,500
Institution SF	350,000	68,000	0	5,221,000	0	0	0	0	900,000	6,539,000

(See Exhibit 1-5 for a map of the projects by their respective status along FasTracks and existing transit corridors.)

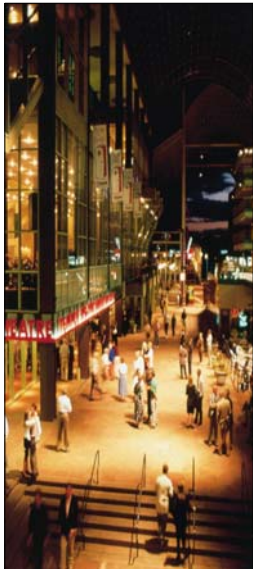


Challenges & Opportunities

- Affordable Living - Sustainability (economic) – maintain quality of life
- Linking/Integrating development, human capital investment, transit, school reform and open space (First/second ring in Denver & Suburbs)
- Flexibility
- Public Involvement
- Partnerships
- ONLY new mistakes



Next Step for the Alliance...
Making the Link for Citizens



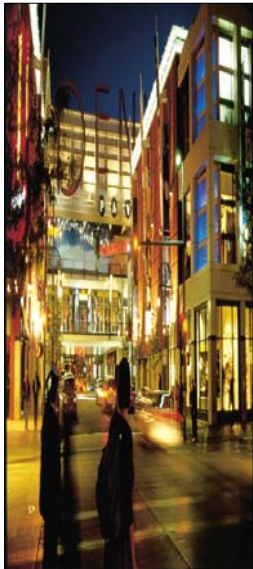
Overview of the Academy Sessions

- Session 1: Reshaping Metro Denver -- the legacy of Transit Oriented Development**
- Session 2: The Denver Region – Its Evolution and the Plan for Growth**
- Session 3: Transit Oriented Development - The Public Perspective**
- Session 4: Transit Oriented Development – The Private Perspective**
- Session 5: Economics of TOD & Making it Affordable**
- Session 6: Community Involvement in TOD**
- Session 7: Individual action plan presentations**



Agenda for Session 1

- Welcome - Kathleen Osher
Executive Director, Transit Alliance
- Program Logistics and Participant Introductions
Dennis Cole, Moderator
- Reshaping Metro Denver – View and discuss “Transit Oriented Development – Reshaping Metro Denver”
- Create Guiding Principles for Metro Denver TOD
- Homework assignment related to individual action plan
- Debrief and evaluate the session



Introductions

- ❖ Name
- ❖ Profession
- ❖ Organization you're associated with related to TOD
- ❖ Describe your individual action plan



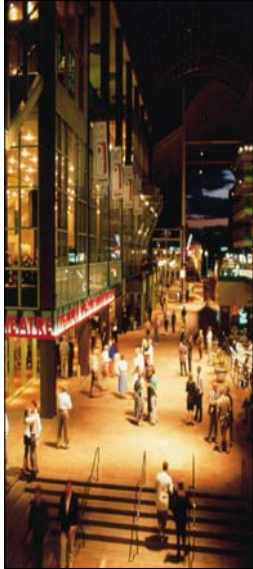
Reshaping Metro Denver: The Legacy of Transit Oriented Development

1. What are the important connections between land use and transportation?
2. How do you see growth in Metro Denver? Do you see demographic shifts as suggested in the video?
3. What are the challenges for building TOD?
4. What are the benefits of TOD? How would you communicate these to friends and family?
5. What are the critical elements for the pedestrian environment?
6. What kinds of activities/uses are most important for TOD?



Goals and Benefits for Metro Denver TOD

- What is the ultimate goal of TOD from an economic standpoint?
- What is the ultimate goal of TOD from a social standpoint?
- What is the ultimate goal of TOD from an environmental standpoint?



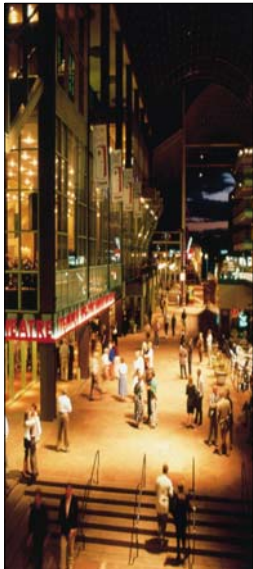
Program Mission

Support the regional success of Transit-Oriented Development (TOD) in the Metro Denver area by providing relevant & timely information to help policy makers, business leaders, and the general public make informed decisions regarding transportation and community development investment.

Desired Outcomes

Academy graduates will:

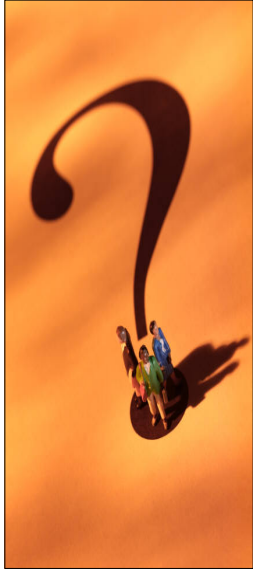
- Actively educate other citizens regarding transit oriented development.
- Actively educate other citizens regarding transportation infrastructure investment.
- Actively gather, analyze and summarize relevant data.
- Support efforts to secure public and private funding.
- Develop and use active listening skills to bring shared meaning to the vocabulary associated with TOD.



For Next Time:

- Fill in 2-3 objectives in your Action Plan
- Review the material presented during this session from the perspective of the role you'll play during the Public Hearing

**Refer to the
Individual Action
Plan Presentation Sheet**



Final Comments or Questions?

**Before you leave, please complete
the Session Evaluation form and
leave it with us.**