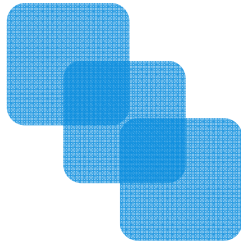


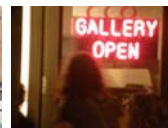
# Unifying Around a Station



Next Stop, Santa Fe Art District

# 2 stops from Downtown

- Buckhorn Exchange
- DHA
- Lincoln Park
- La Alma
- Historic homes
- The Parkway
- West High & Greenlee
- Santa Fe Art District

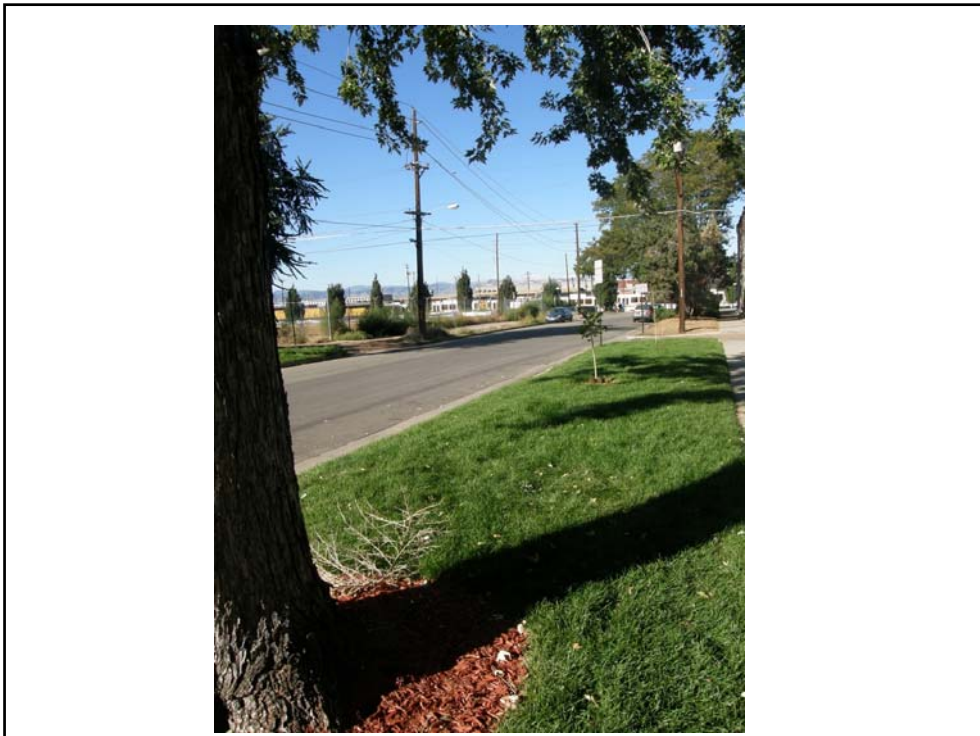


# TOD Planning so far...



- **Osage Mercado**
- **Community Workshops**
- **City Planning**
- **DHA on Board**









Redevelopment should offer current residents greater amenities and opportunities- not displacement.

The cultural heritage of the community should be embraced- not discarded.

As a historic place, & one of Denver's oldest neighborhoods, new construction should work together with the old.

## Existing Housing Supply





## Santa Fe is the Heart of the Art

- **First Friday Art Walk is well established now, drawing visitors from across the region, and beyond**



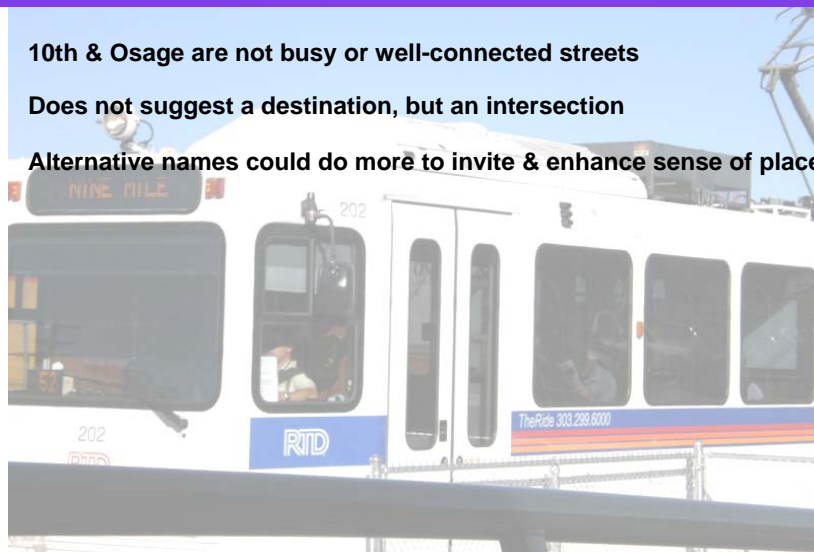
- **The surrounding homes and community reflect an artistic sensibility**



- **Santa Fe drive is the geographic center, and unifying element**

## 10th & Osage Station

- **10th & Osage are not busy or well-connected streets**
- **Does not suggest a destination, but an intersection**
- **Alternative names could do more to invite & enhance sense of place**



# Next Stop?

