

Neighborhoods and “NIMBY”ism: PEORIA & SMITH FUTURE LIGHT RAIL STATION

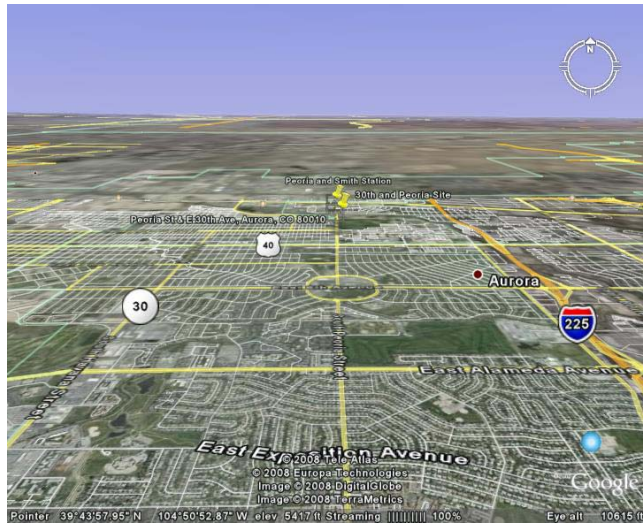
Individual Action Plan for Sarah Buhr

Action Plan Objective

To learn more about the neighborhood and the people living or working around the future Peoria/Smith light rail station. To specifically look at the neighborhood closest to the site around a proposed TOD affordable housing development at 30th and Peoria.



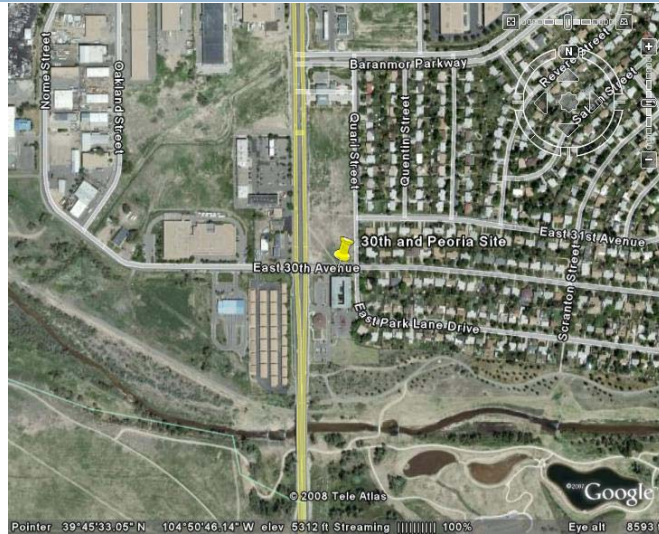
The region...



The neighborhood...



The site...



Tactics

Research area housing, commercial, industrial and economic history for the neighborhood around the future light rail station at Peoria and Smith.

Research how the commuter rail intersecting with the I-225 local light rail will affect station area planning. Speak with City of Aurora's contracted urban planning firm.



Speak with local council person representing the area of Peoria and Smith Rd. about constituents' concerns about light rail and affordable housing in the area.

Summary

